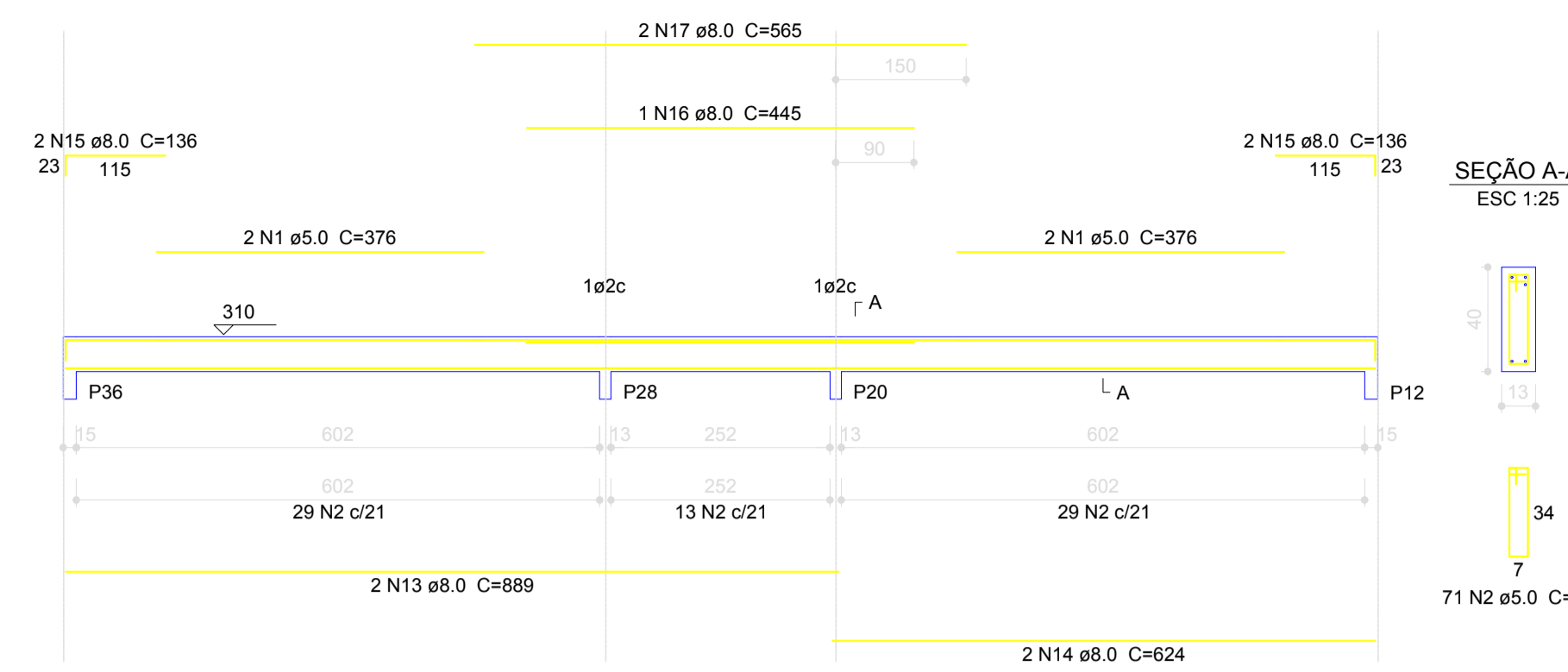
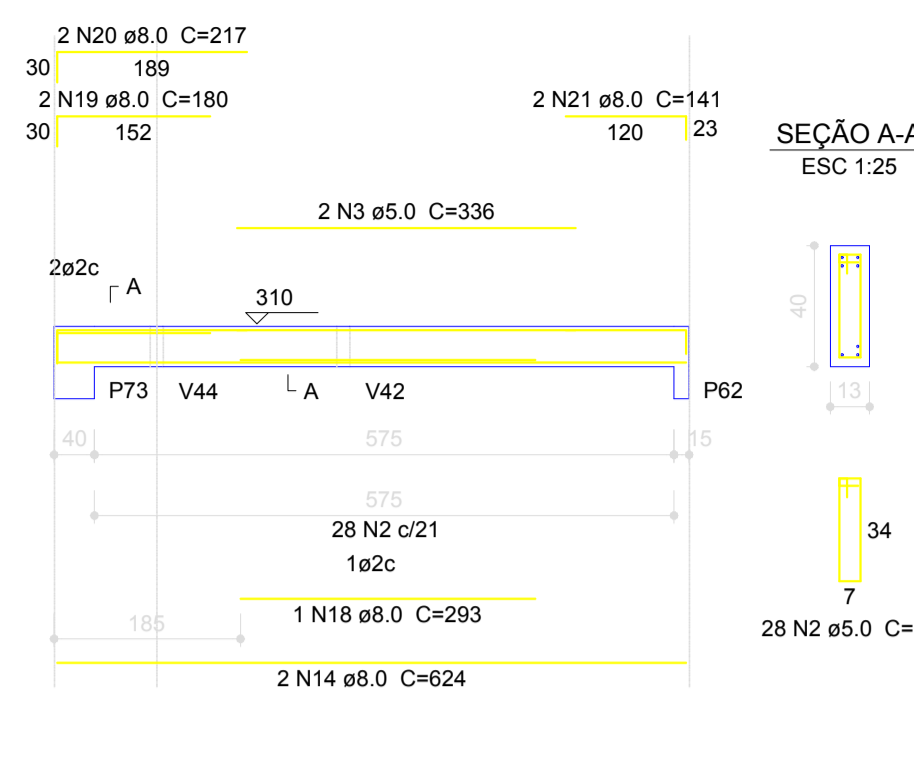


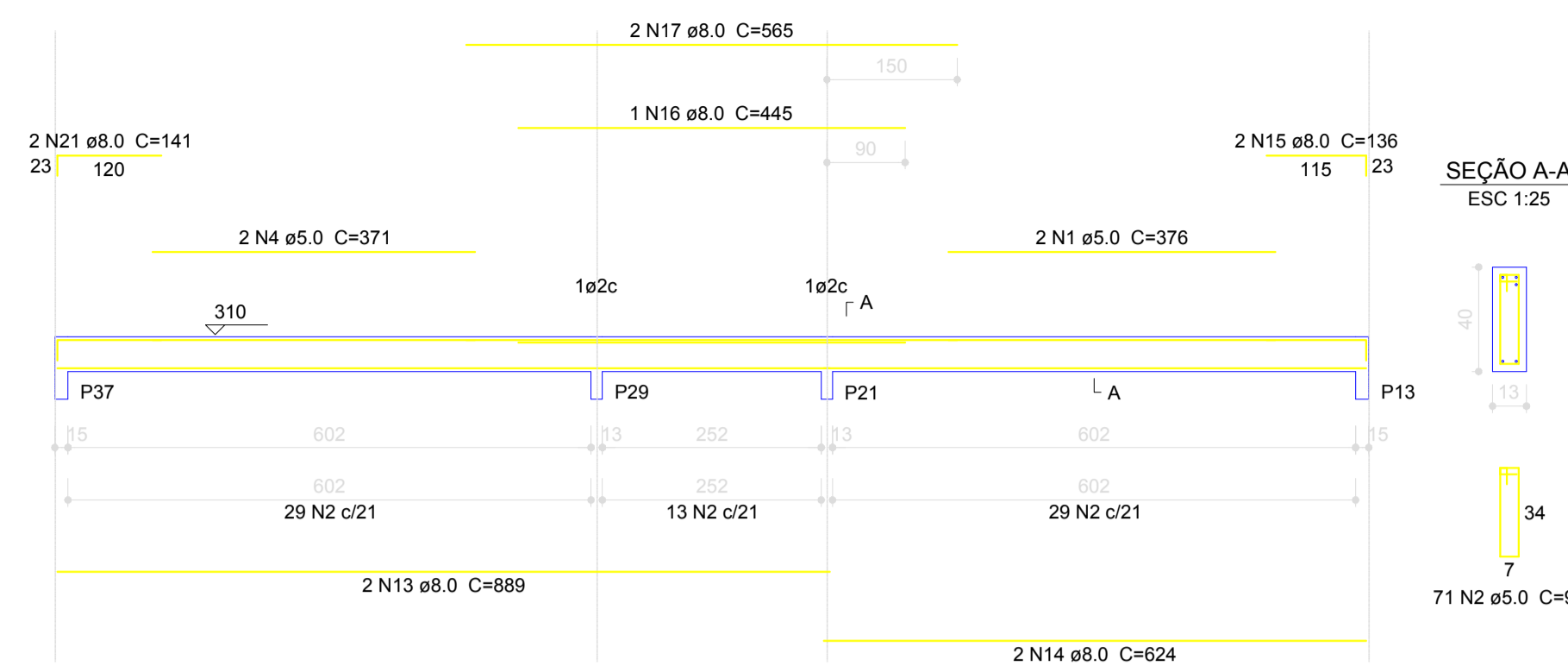
V99
ESC 1:75



V102
ESC 1:75



V103
ESC 1:75



Resumo do aço

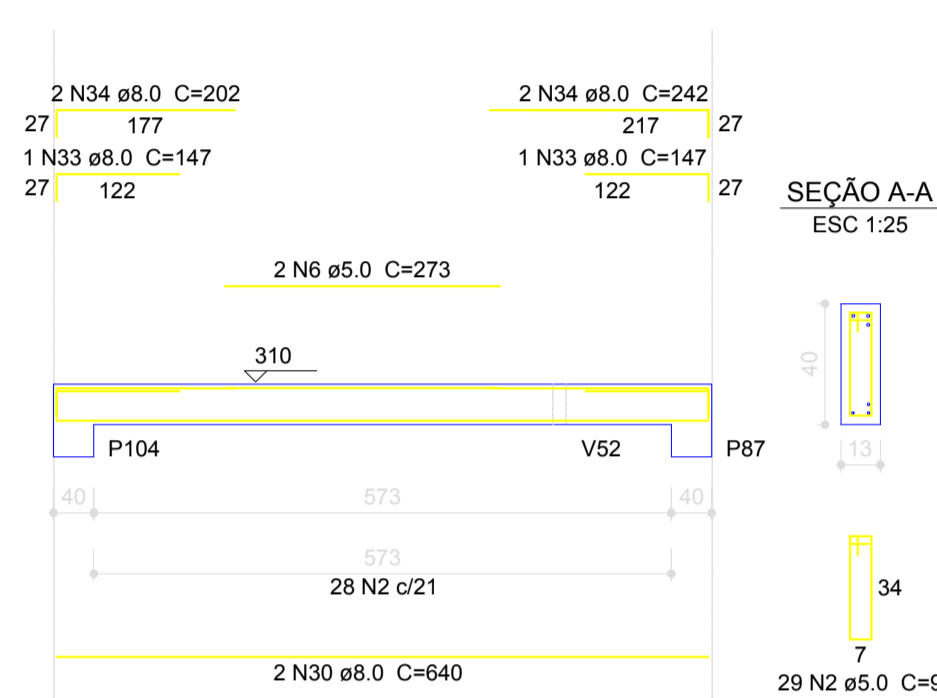
AÇO	DIAM (mm)	C.TOTAL (m)	PESO (kg)
CA50	8.0	512.4	202.4
CA60	5.0	721.6	111.1
PESO TOTAL (kg)			
CA50		202.4	
CA60		111.1	

Volume de concreto (C-25) = 7.36 m³
Área de forma = 109.44 m²

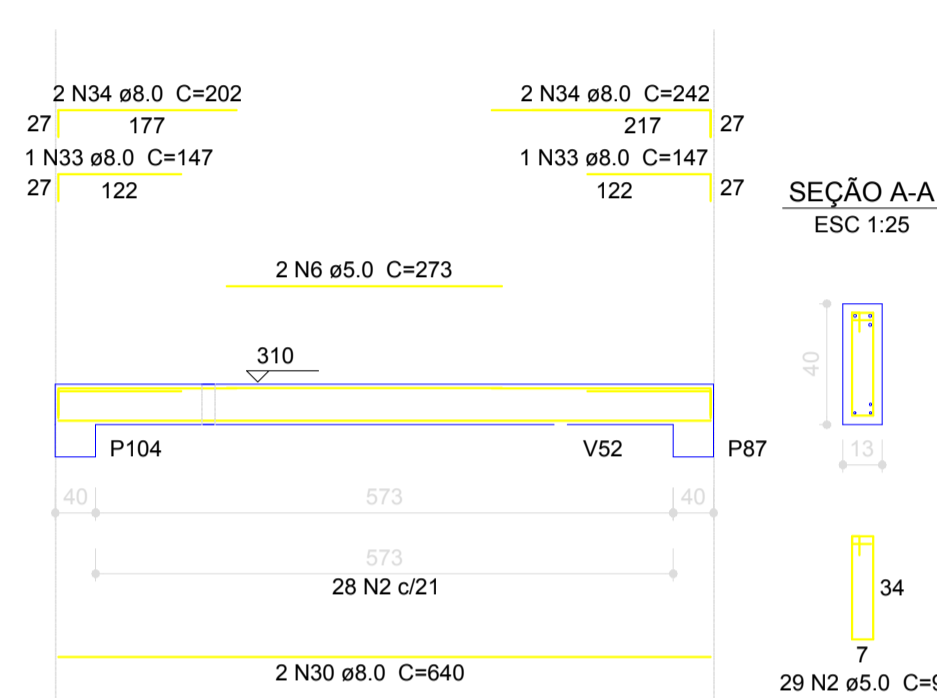
V111
ESC 1:75



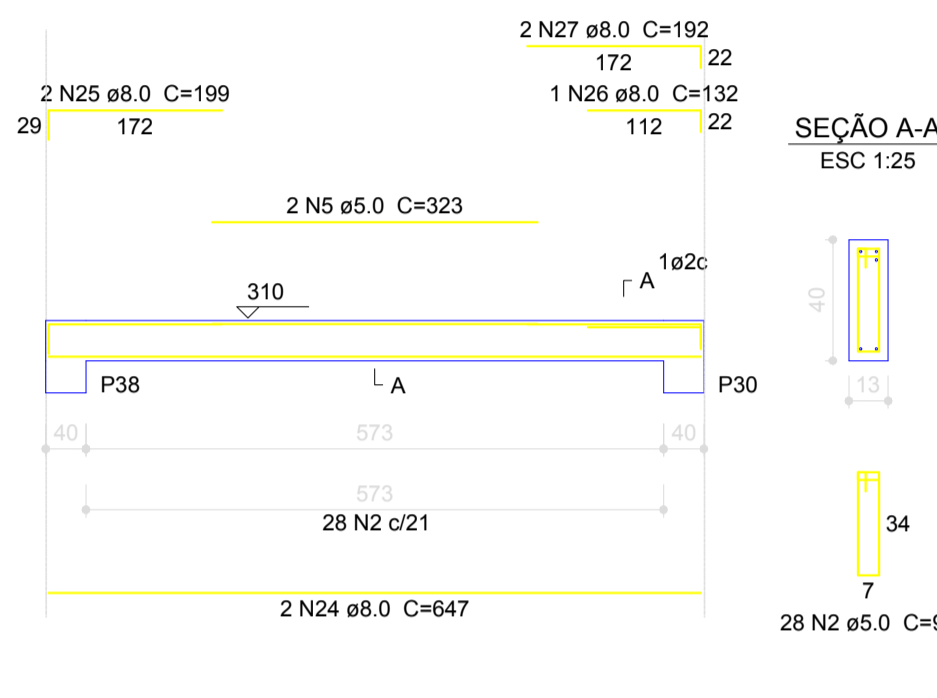
V112
ESC 1:75



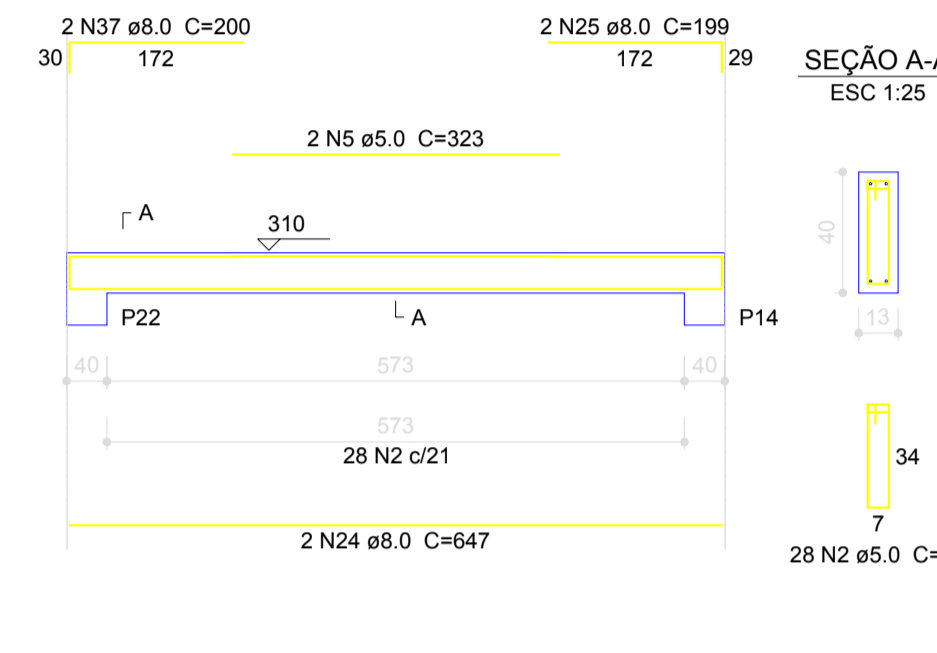
V112'
ESC 1:75



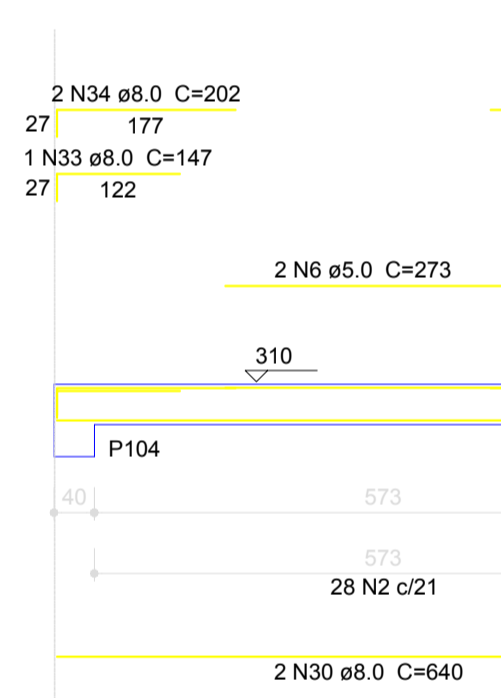
V113
ESC 1:75



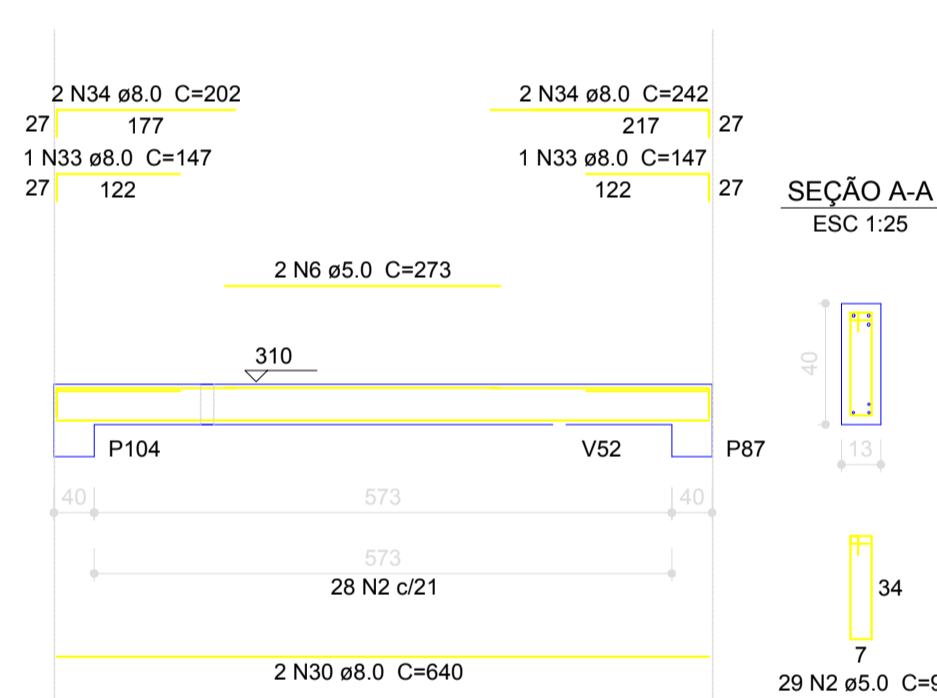
V114
ESC 1:75



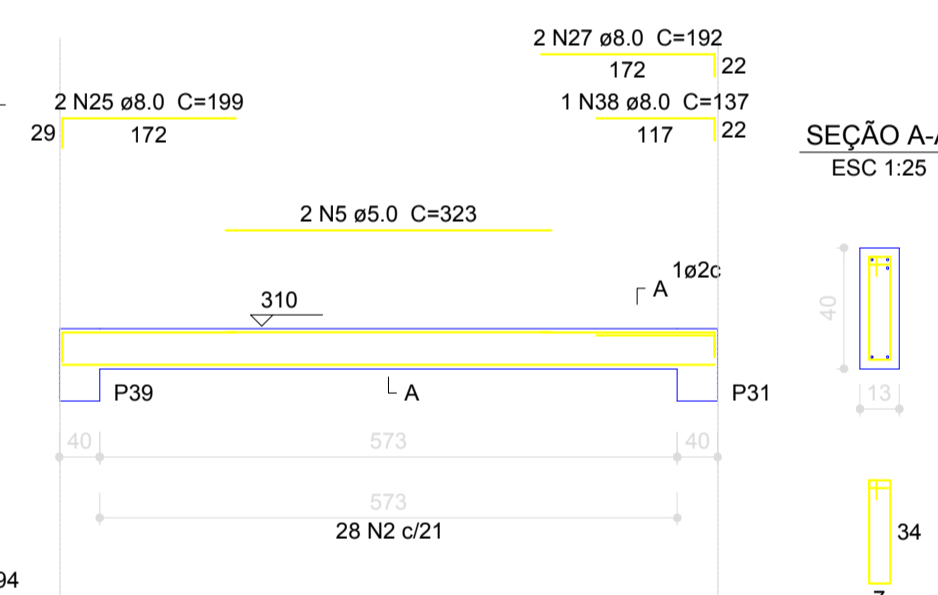
V115
ESC 1:75



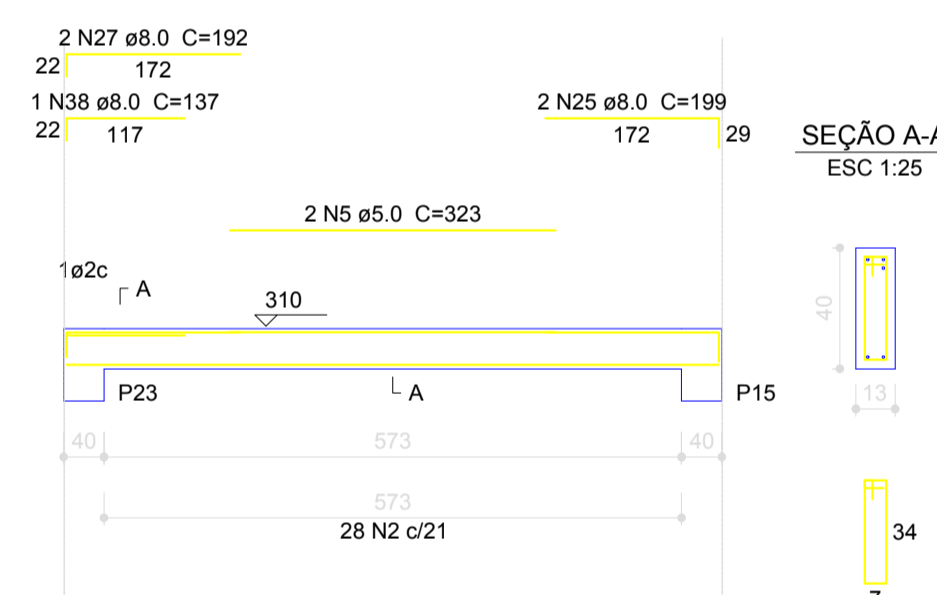
V115'
ESC 1:75



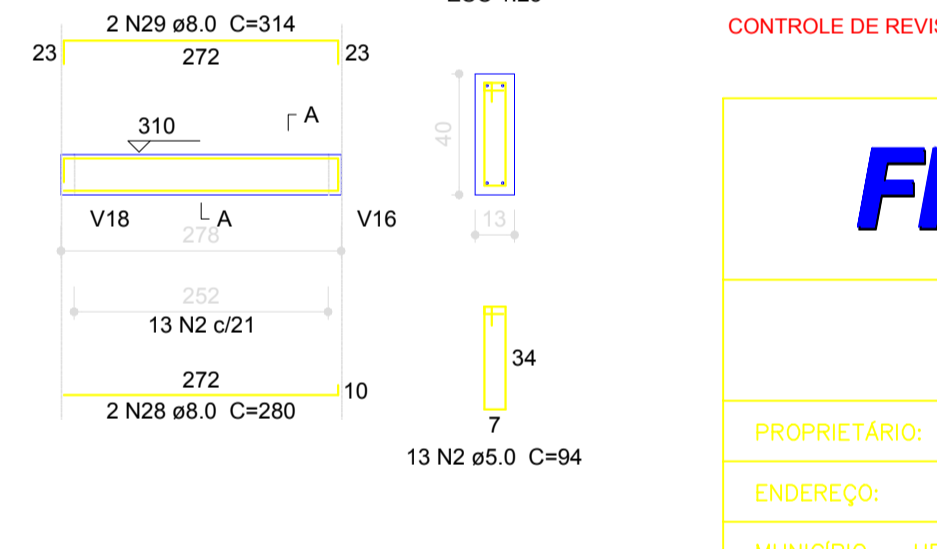
V116
ESC 1:75



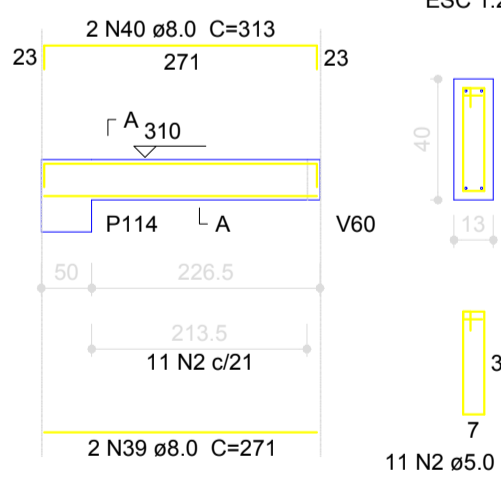
V117
ESC 1:75



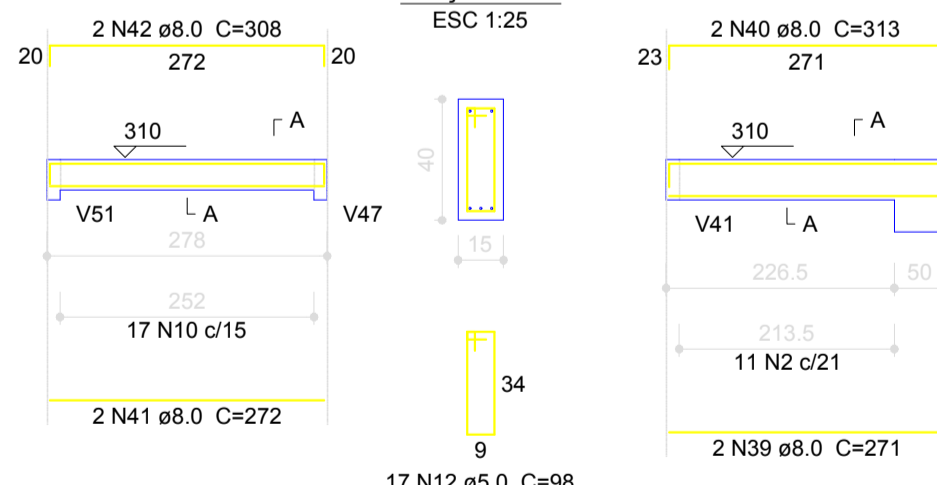
V118
ESC 1:75



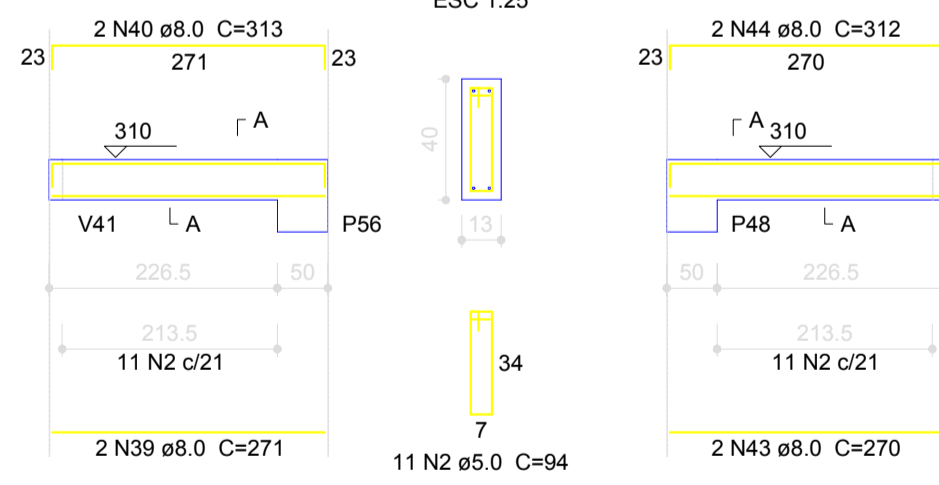
V119
ESC 1:75



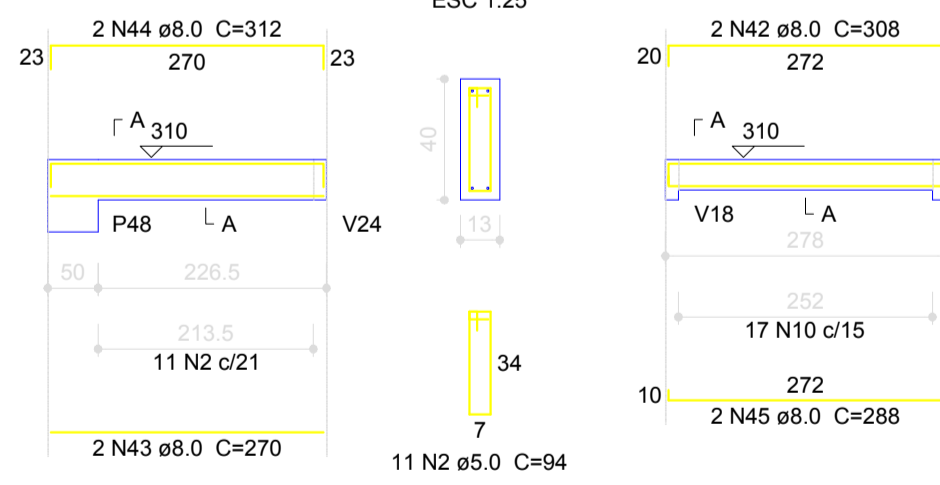
V120
ESC 1:75



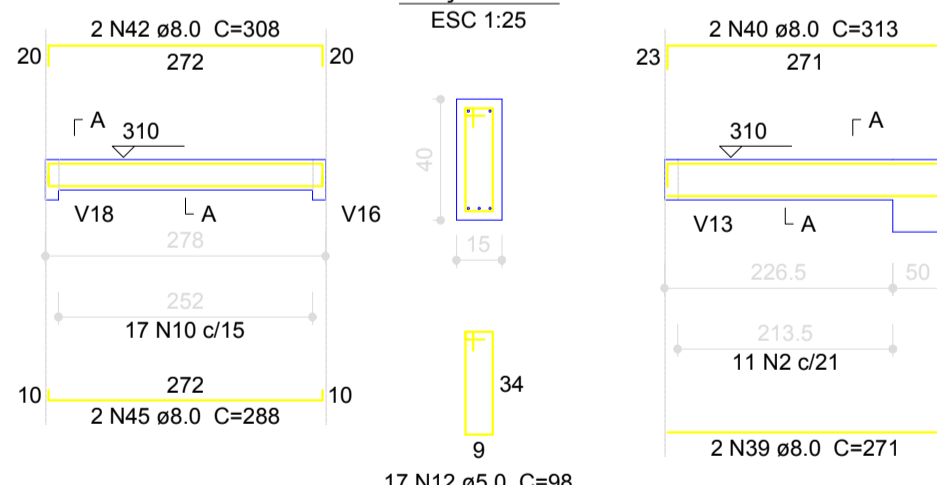
V121
ESC 1:75



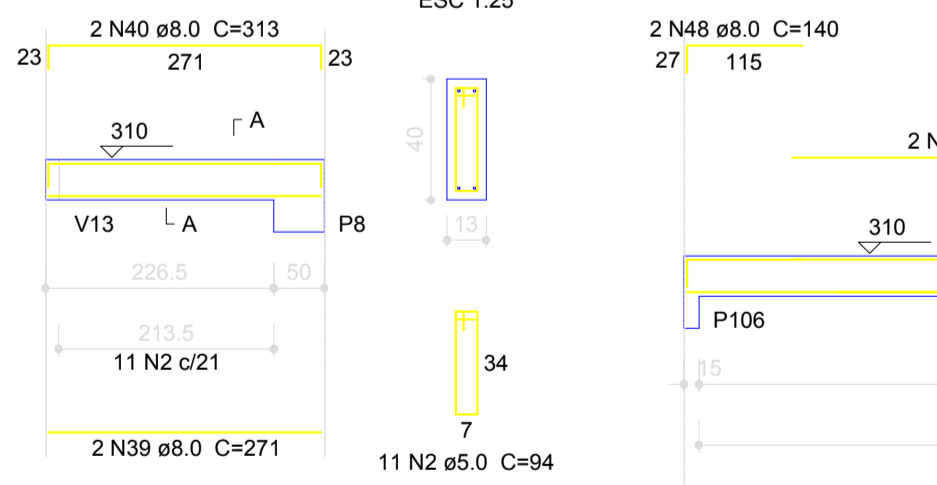
V122
ESC 1:75



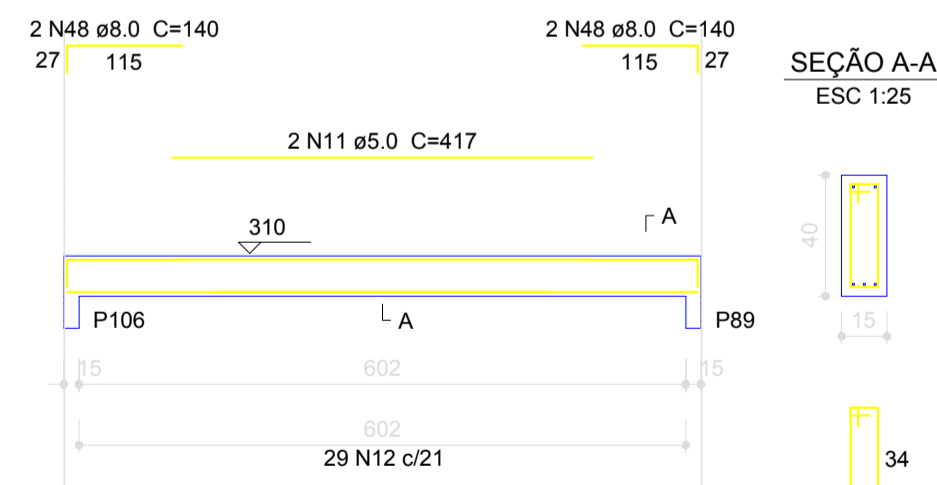
V123
ESC 1:75



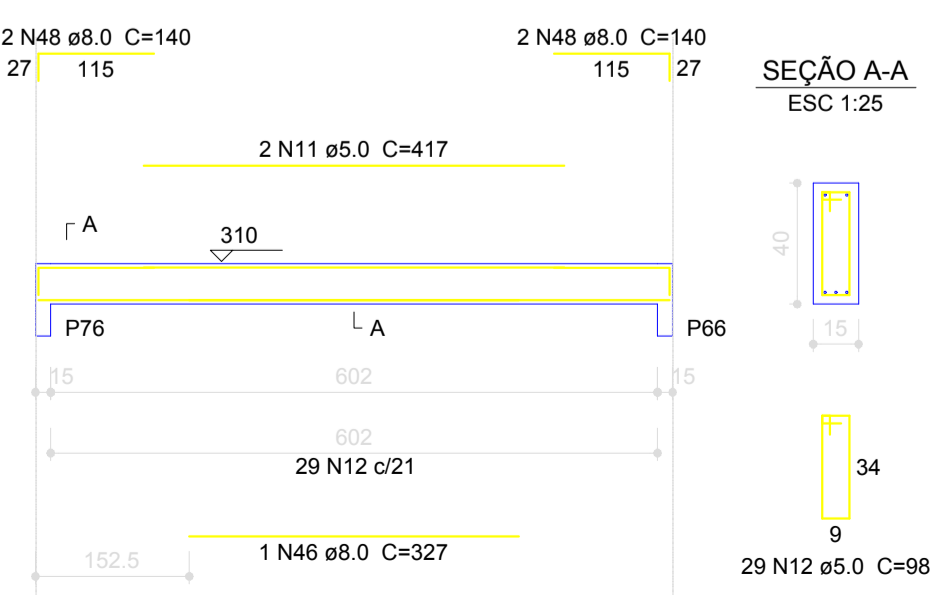
V124
ESC 1:75



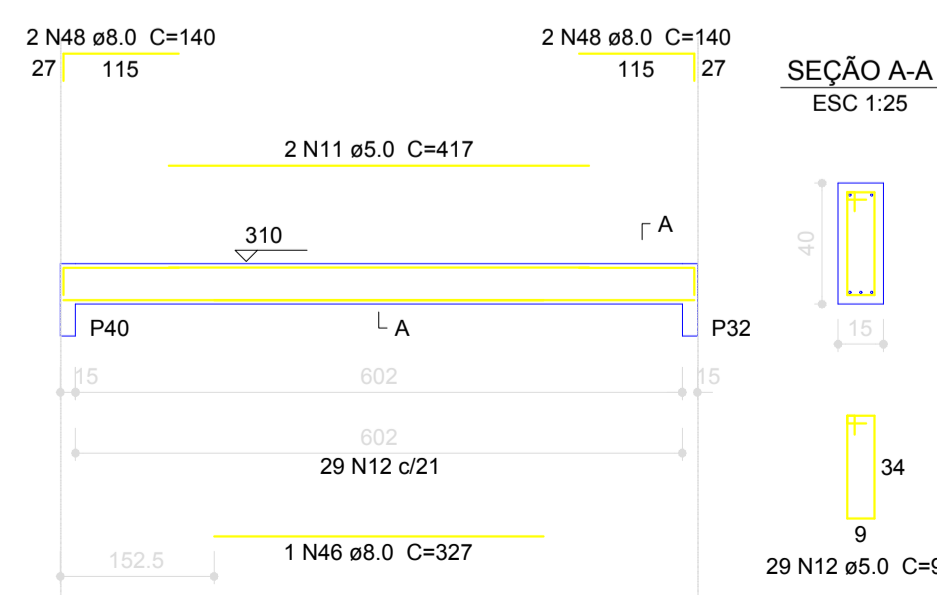
V125
ESC 1:75



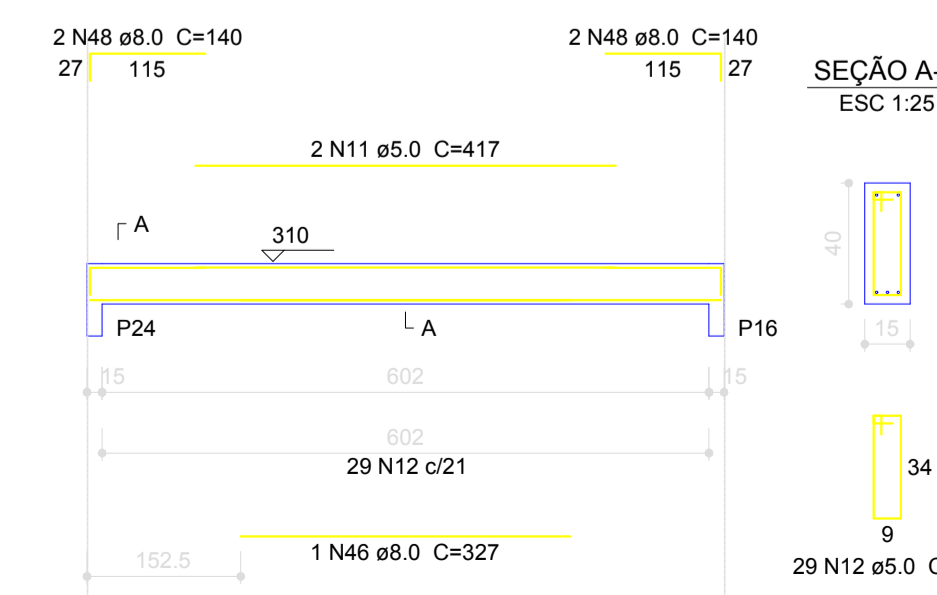
V126
ESC 1:75



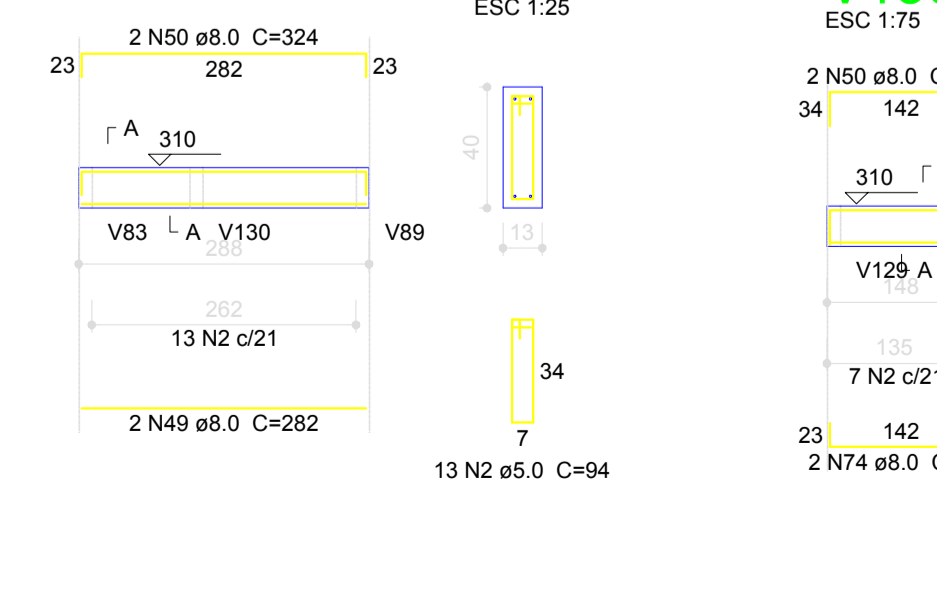
V127
ESC 1:75



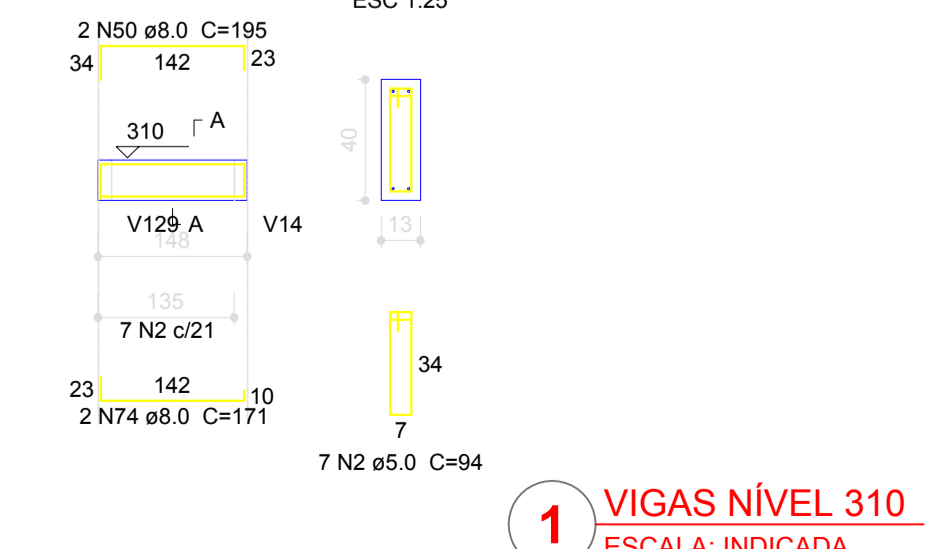
V128
ESC 1:75



V129
ESC 1:75



V130
ESC 1:75



Atendimento à NBR 9050/2015:
Alteração: quadro de áreas, fechamento frontal, sanitários infantis 1 e 2, altura da platibanda, mobiliário e equipamento, altura da cerâmica nos sanitários, cor dos portões dos solários, e altura da porta PA4.
Anexos: do gradil e quadro de cargas no castelo d'água, de duchas higiênicas e escaninhos pré-escola.
Supresso: Viga nível 000; V80 e V86 e Viga nível 310; V81 e V87.
Redimensionamento: Viga nível 000; V111 e V114 e Viga nível 310; V112 e V115.
Alteração paredes - shaft para tubulação hidráulica e deslçamento; alteração da altura da platibanda; Correção - Blocos: B83 e B84; Pilares: P95, P96, P101 e P102; Vigas nível 310; V61.

Nº	DATA	DESCRIÇÃO
02	JANEIRO/2017	
01	JULHO/2016	

CONTROLE DE REVISÕES

FNDE Fundo Nacional de Desenvolvimento da Educação
Ministério da Educação

PROJETO PADRÃO - FNDE

PROPRIETÁRIO: _____
ENDEREÇO: _____
MUNICÍPIO - UF: _____
PROPRIETÁRIO: _____
RESP. TÉCNICO: **CREA**
AUTOR DO PROJETO: **CAU**

DLPO: _____
CREA
RA
OBSERVAÇÕES: _____

PROGRAMA PROINFÂNCIA - PROJETO TIPO 1
PROJETO DE ESTRUTURA

COORDENAÇÃO CGEST - Coordenação Geral de Infraestrutura Educacional	ESTRUTURA DE CONCRETO VIGAS NÍVEL 310 FORMA E ARMAÇÃO	SCV
REVISÃO R.00 R.01 R.02	ESCALA INDICADA	PRANCHAS 16/19
FORMATO A1 (841x594)	DATA EXATIDA JANEIRO/2017	

1 VIGAS NÍVEL 310
ESCALA: INDICADA